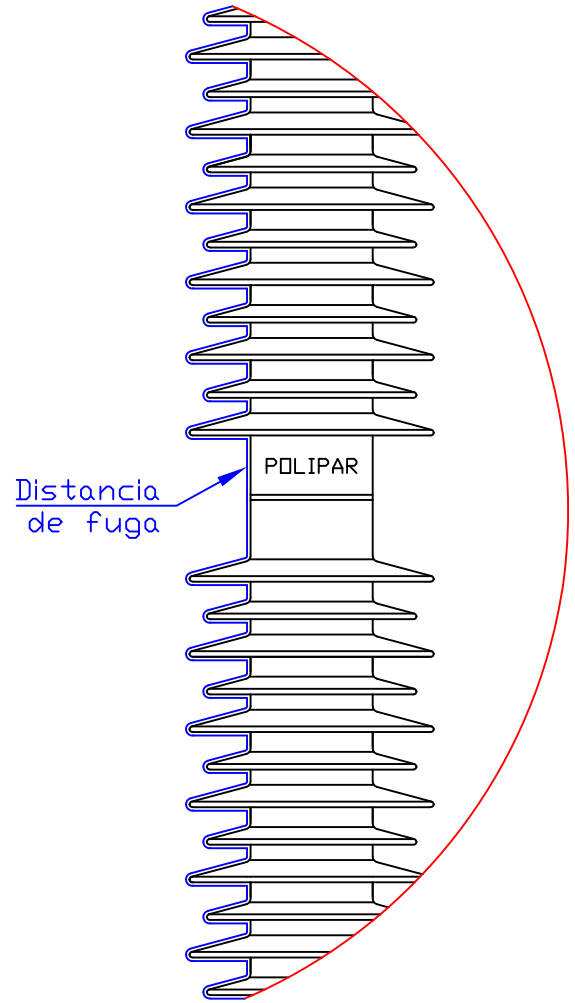
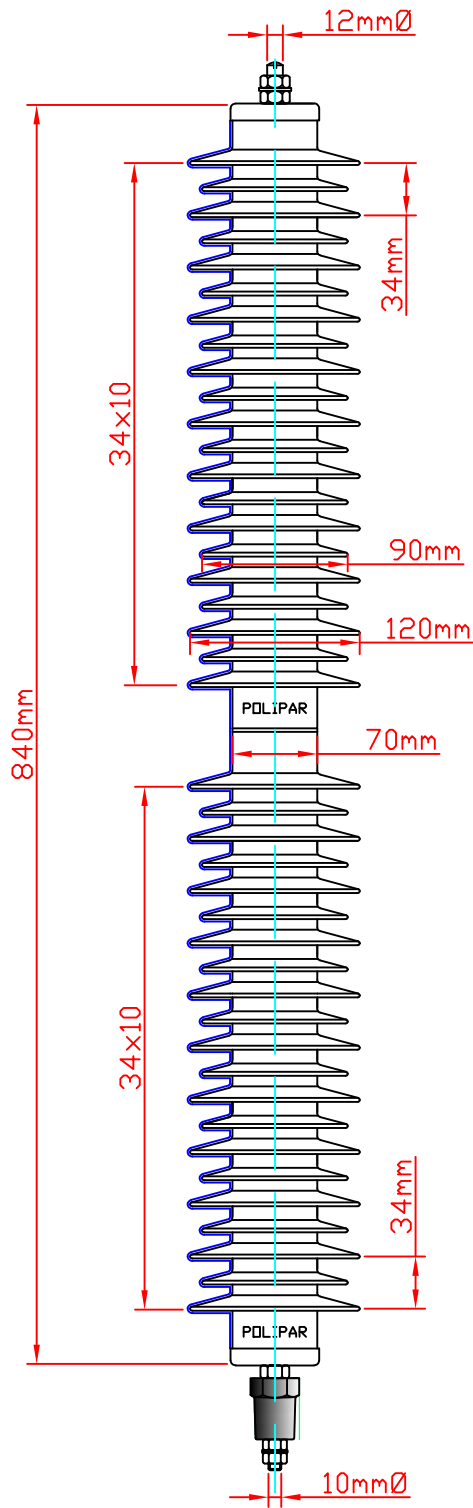


DRAWN BY	DESIGNED BY	CHECKED BY	APPROVED BY	SCALE	DATE
A.D.	A.D.	K.D.	K.D.	S/E	31/07/2020
27/07/2020	27/07/2020	31/07/2020	31/07/2020		



Notas:

- Las dimensiones están dadas en milímetros (mm)
- Las tolerancias en las dimensiones son de $\pm 5\%$.

POLIPAR ENERJI SYSTEM



N
A
M
E

PARARRAYO DE LINEA 60kV, 10 kA, CLASE 2

PLANO DE DIMENSIONES

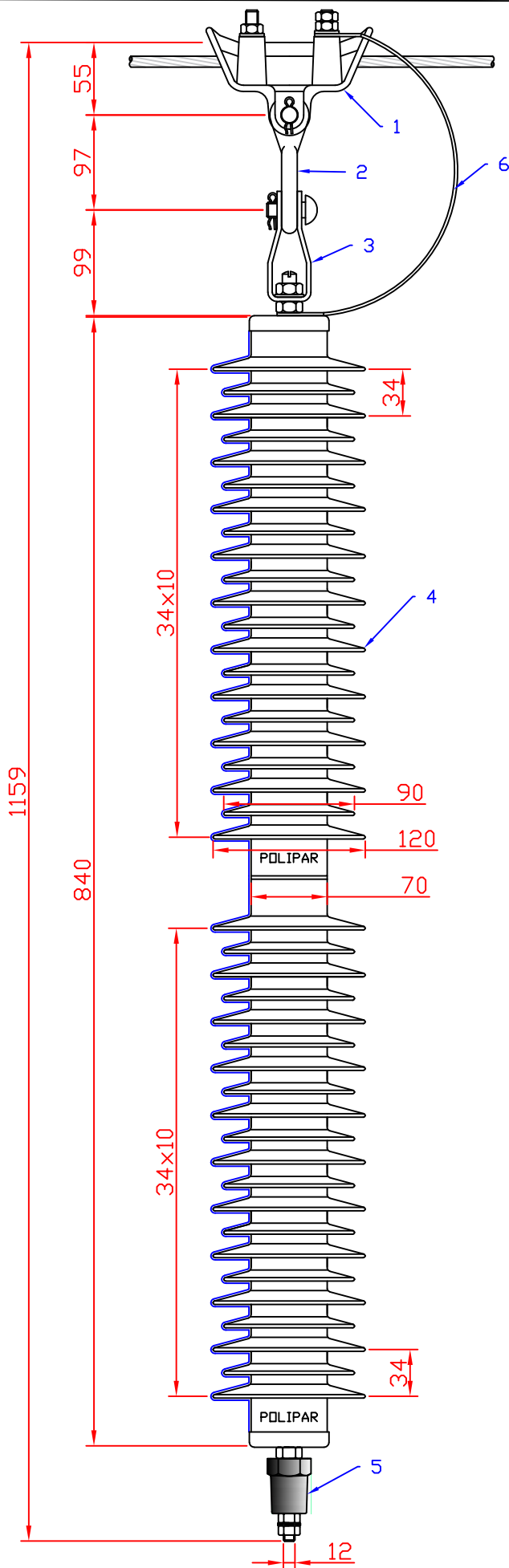
REF. :

CONCURSO LP-03-2020/ELPU

MODELO:

HP-TLA 60kV

DRAWN BY	DESIGNED BY	CHECKED BY	APPROVED BY	SCALE	DATE
A.D.	A.D.	K.D.	K.D.	S/E	31/07/2020
27/07/2020	27/07/2020	31/07/2020	31/07/2020		



Notas:

- 1.- Grapa de suspensión
- 2.- Adaptador anillo - ojo ovalado
- 3.- Adaptador tipo clevis
- 4.- Pararrayo polimérico
- 5.- Desconectador automático
- 6.- Cable flexible

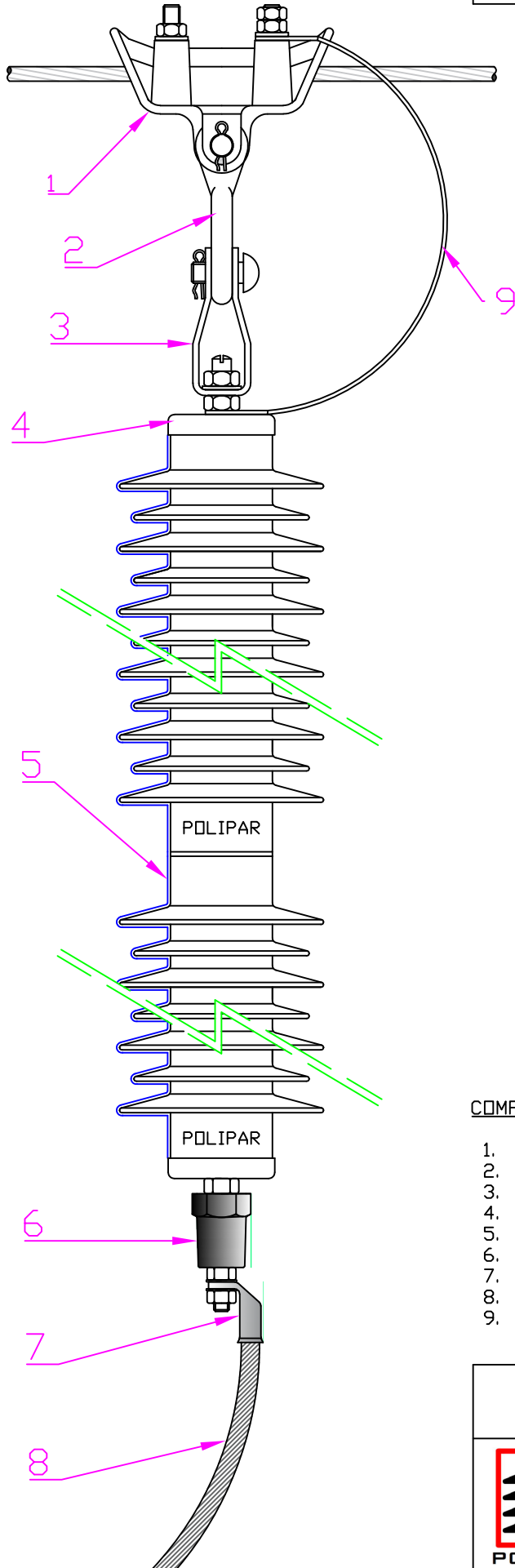
- Las dimensiones están dadas en milímetros (mm)
- Las tolerancias en las dimensiones son de $\pm 5\%$

POLIPAR ENERJI SYSTEM



N A M E	PARARRAYO DE LINEA 60kV, 10 kA, CLASE 2
	PLANO DE DIMENSIONES-CONJUNTO
REF. :	CONCURSO LP-03-2020/ELPU
MODELO:	HP-TLA 60kV

DRAWN BY	DESIGNED BY	CHECKED BY	APPROVED BY	SCALE	DATE
A.D.	A.D.	K.D.	K.D.	S/E	31/07/2020
27/07/2020	27/07/2020	31/07/2020	31/07/2020		



COMPONENTES DE CONJUNTO:

1. Grapa de suspensión para AAAC 120-150mm²
2. Adaptador anillo - ojo ovalado
3. Adaptador tipo clevis
4. Placa de características
5. Pararrayo polimérico 60kV
6. Desconectador automático
7. Terminal a compresion 90° de Cu estañado
8. Cable flexible de cobre estañado 25mm²
9. Cable de conexión flexible de Cu estañado

POLIPAR ENERJI SYSTEM



N
A
M
E

PARARRAYO DE LINEA 60kV, 10 kA, CLASE 2

COMPONENTES DE CONJUNTO

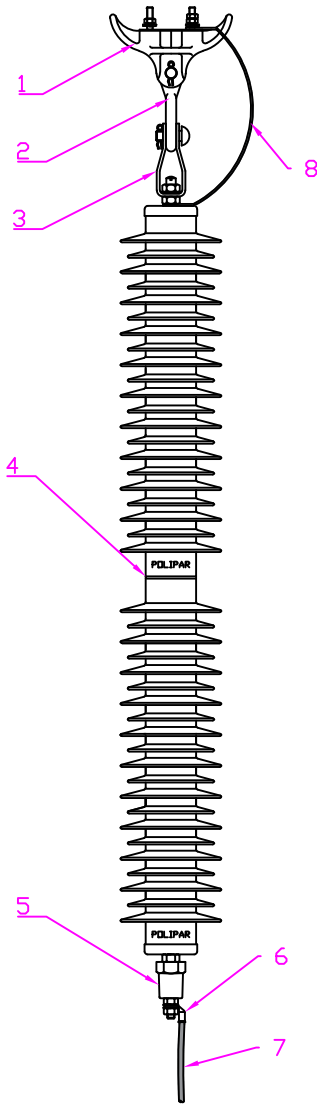
REF. :

CONCURSO LP-03-2020/ELPU

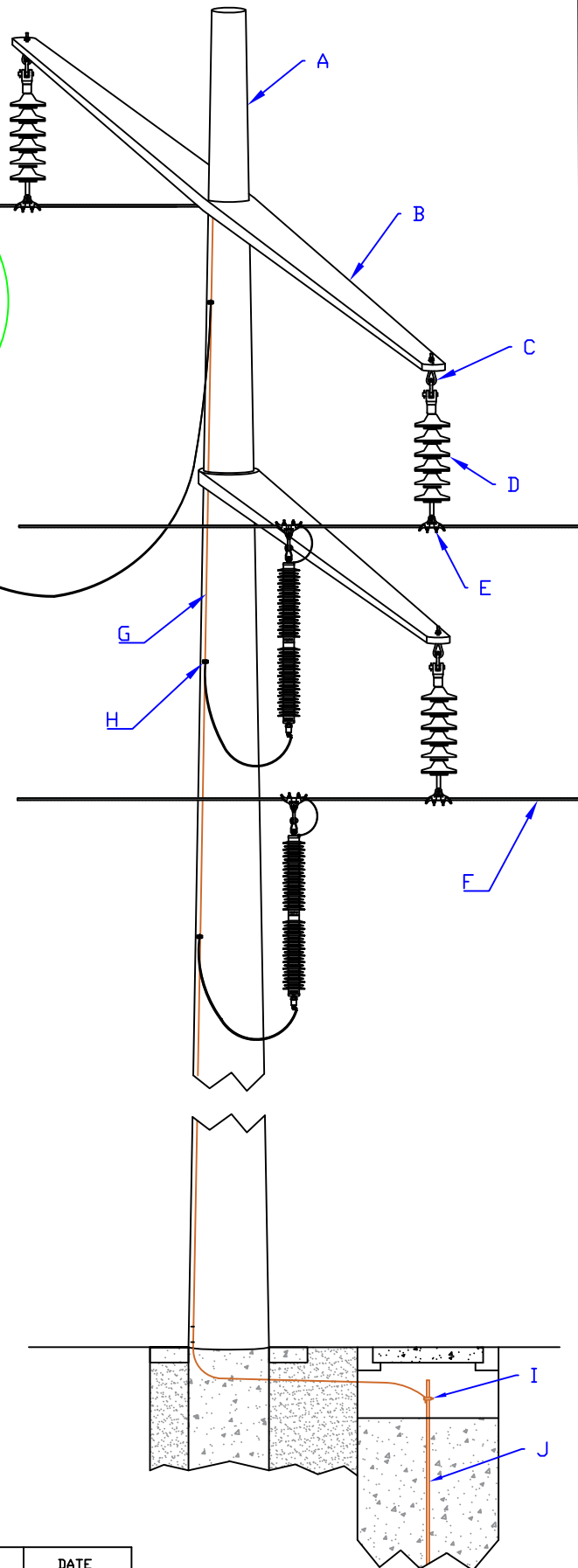
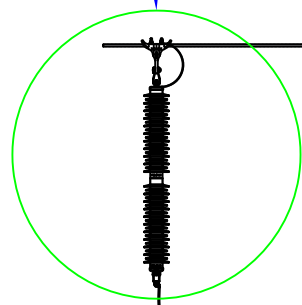
MODELO:

HP-TLA 60kV

DETALLE A



DETALLE "A"

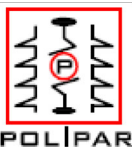


Nota: Suministros parte del armado, pero no del suministro.

- A. POSTE DE C.A.V.
- B. MENSULA DE C.A.V.
- C. PERNO OJAL
- D. AISLADOR POLIMERICO 60KV
- E. GRAPA DE SUSPENSIÓN DE ALUMINIO
- F. CONDUCTOR AAAC
- G. CONDUCTOR DE Cu PARA PAT.
- H. CONECTOR PARALELO PARA BAJA A TIERRA
- I. CONECTOR ELECTRODDO-CCONDUCTOR A TIERRA
- J. ELECTRO DE POZO A TIERRA.

METRADO x FASE

08	Cable flexible Cu estañado 25m ² (30 cm)	01 un
07	Cable flexible Cu estañado 25mm ²	5.0 mt
06	Terminal a compresión 90°, 25mm ²	01 un
05	Desconectador automático	01 un
04	Pararrayo polimérico 60kV, 10kA, Cl 2	01 un
03	Adaptador tipo clevis	01 un
02	Adaptador anillo - ojal ovalado	01 un
01	Grapa de suspension AAAC 120-150mm ²	01 un
POSIC.	DESCRIPCIÓN	CANT.



DRAWN BY	DESIGNED BY	CHECKED BY	APPROVED BY	SCALE	DATE
D.G.R	F.T.S	M.D.R	I.G.T	S/E	
31/10/14	31/10/14	31/10/14	31/10/14		

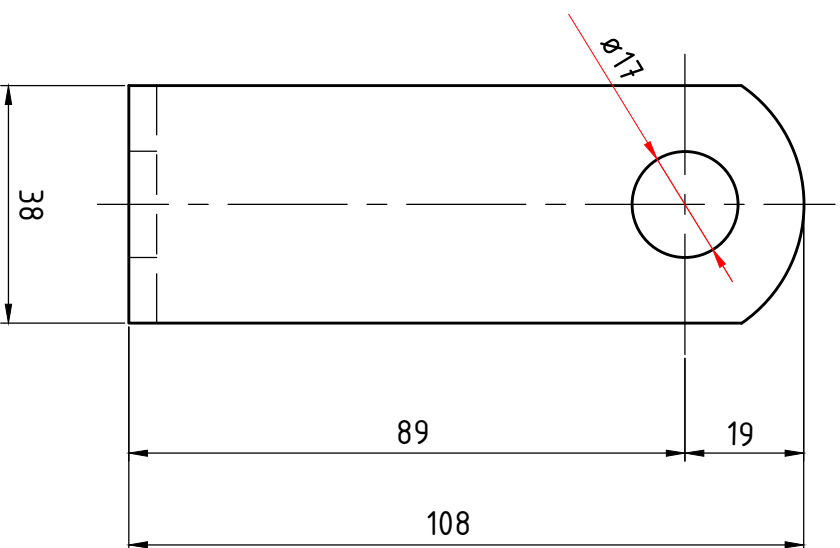
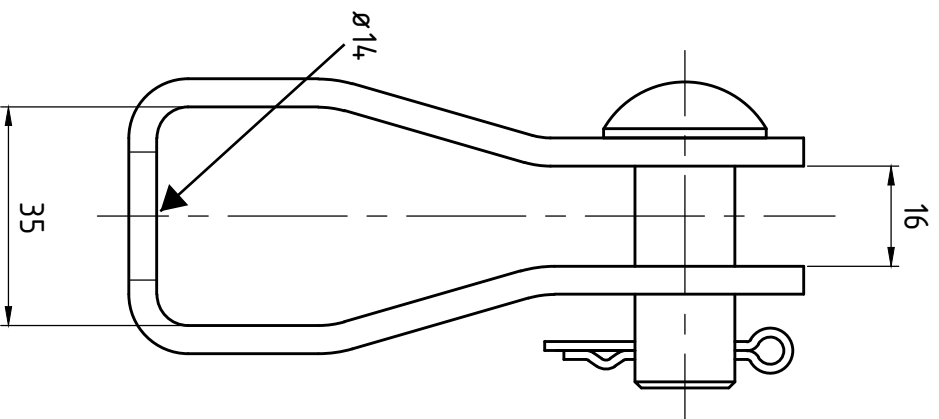
ESQUEMA DE CONXIONADO DE PARARRAYO DE 60KV TIPO TLA EN LINEA DE TRANSMISIÓN

NOTA: *No son parte del suministro.

DIBUJO: N°60KV_TLA/2_ELP/PERU-003

PROPRIETARY INFORMATION

The information contained in this manufacturing schematic contains confidential information intended for use only by VIC employees. Reading, discussing, distributing, or copying any of the information contained herein, without written permission from authorized VIC personnel is strictly prohibited. If you have received this manufacturing schematic in error, please notify VIC by telephone, and return all documents to VIC at the address shown herein.

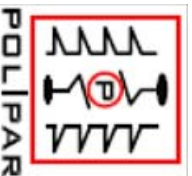


NOTES:

1. Tolerance: +/- 5% for all dimensions
2. All dimensions are in mm, unless otherwise specifications.
3. Body and Pin Finish: Hop dip galvanized ASTM A153 and ISO 1459
4. Body and Pin material : Forged Steel.
5. Cotter key: Stainless Steel
6. Mechanical Strength: 40 KN

CODE: C16

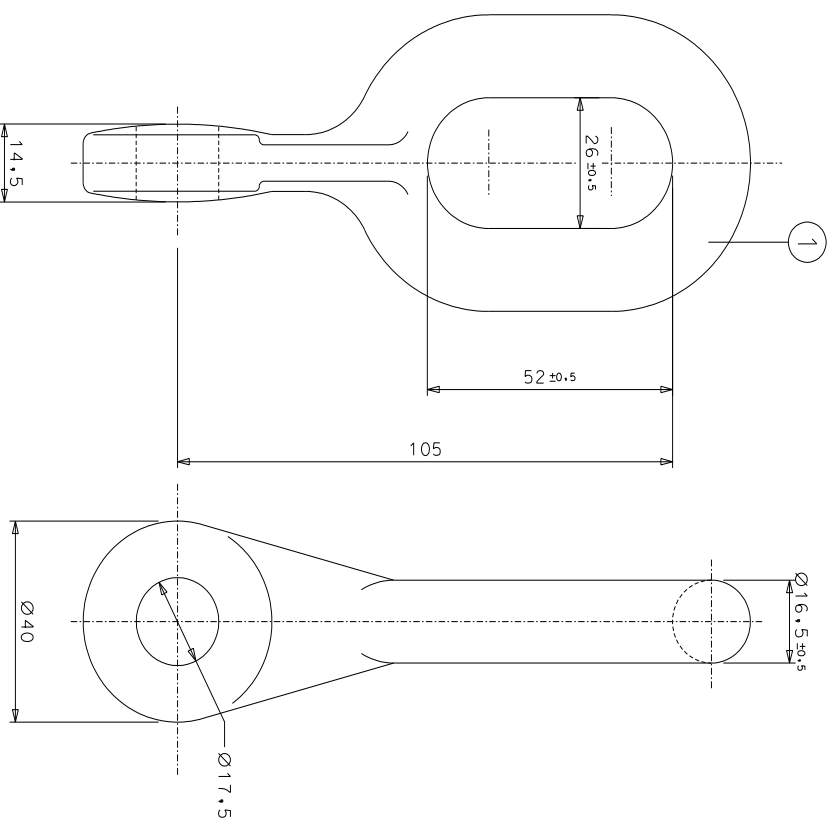
CLEVIS FITTING



POLIPAR ENERJİ SYSTEM

PROPRIETARY INFORMATION

The information contained in this manufacturing schematic contains confidential information intended for use only by VIC employees. Reading, discussing, distributing, or copying any of the information contained herein, without written permission from authorized VIC personnel is strictly prohibited. If you have received this manufacturing schematic in error, please notify VIC by telephone, and return all documents to VIC at the address shown herein.

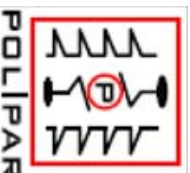


NOTES:

1. Tolerance: +/- 5% for all dimensions
2. All dimensions are in mm, unless otherwise specifications.
3. Finish: Hop dip galvanized ASTM A153 and ISO 1459
4. Body material : Forged steel.
5. Mechanical Strength: 70 kN

CODE: EE16

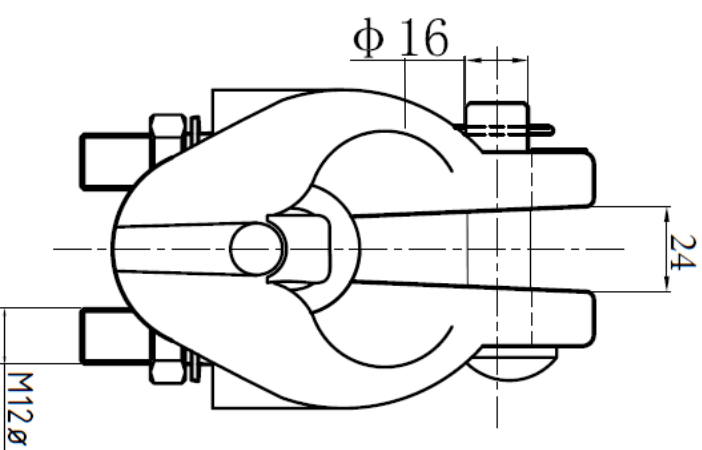
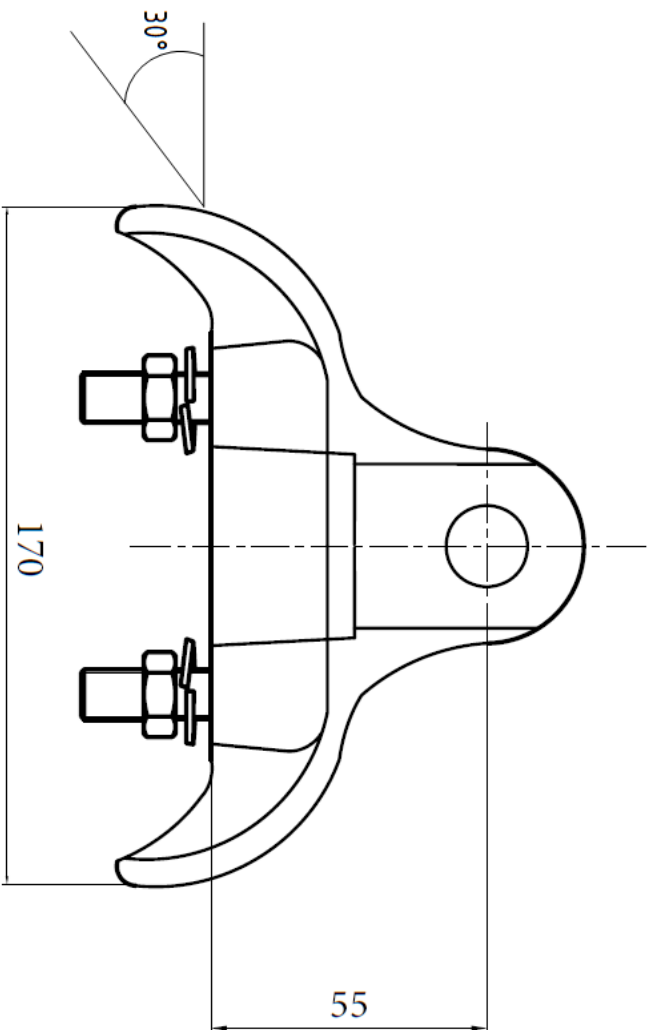
EYE - EYE FITTING



POLIPAR ENERJİ SYSTEM

PROPRIETARY INFORMATION

The information contained in this manufacturing schematic contains confidential information intended for use only by VIC employees. Reading, discussing, distributing, or copying any of the information contained herein, without written permission from authorized VIC personnel is strictly prohibited. If you have received this manufacturing schematic in error, please notify VIC by telephone, and return all documents to VIC at the address shown herein.

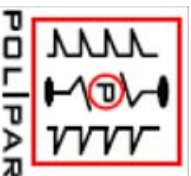


NOTES:

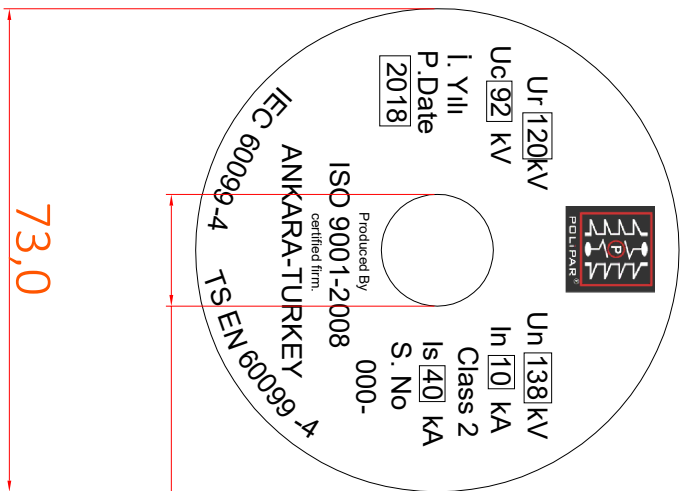
1. Tolerance: +/- 5% for all dimensions
2. All dimensions are in mm, unless otherwise specifications.
3. Bolts, nuts, washer and Pin finish: Hop dip galvanized ISO 1459
4. Cotter key: Stainless Steel.
5. Body material : Aluminum alloy.
6. Mechanical Strength: 76 kN

CODE: GS-2

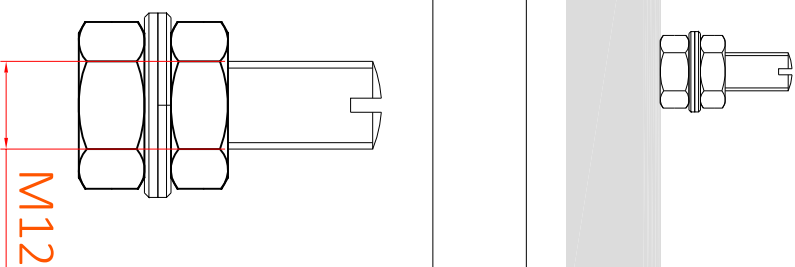
ALUMINUM SUSPENSION CLAMP 120-150mm²



POLIPAR ENERJI SYSTEM



10,3



M12

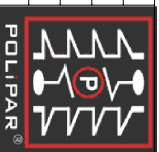
	Name	signature
Designer	Bıyık NAN	
Examiner	ALPARSLAN DAĞDİLEN	
Collator		
Assessor		
Technology	Metal	

Marks item checked doc no signature changed date

Date

24.07.2018

Surge Arrester Mark,



ERKAN ELEKTROMEKANİK
MALZEMELER ELEKTRİK MUHENDİSLİK
TAAHÜT, İHR. SAN. ve TİC. AŞ.
(POLİPAR BRAND OWNER)

Serial no: 2018 -00021

assembly drawing no

A4