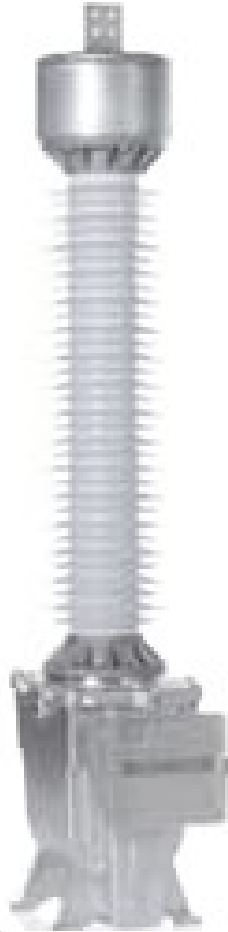


IEC standartlarına uygun olarak üretim ve testleri yapılmaktadır.

Production and testing are carried out in accordance with **IEC** Standards.

HIGH CURRENT TRANSFORMER

CAPACITIVE COLTAGE TRANSFORMER



kalite quality

kalite
quality



PSW
BERLIN



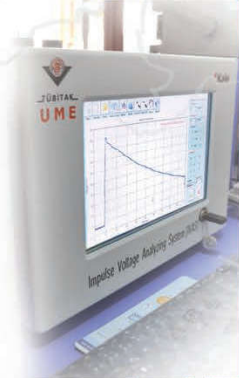
ENERJİDE
ÖZGÜR
YENİLİKÇİ
ÇÖZÜMLER

FREE
INNOVATIVE
SOLUTIONS
IN ENERGY

Polipar YG Laboratuvar / Polipar HV Laboratory



- 0-1200 kV Yüksek Gerilim Darbe Jeneratör Sistemi
- 0-300 kV Yüksek Gerilim Darbe Jeneratör Sistemi
- 0-300 kV Yağda ve Kuruda A.C. Sürekli Test Ölçüm Sistemi
- 0-150 kV Kısmi Deşarj Ölçüm Sistemi
- 0-150kV A.C. Rutin Deney Sistemi
- 0-150 kV Elektromekanik Çekme Test Sistemi
- 0-30kN Mekanik Çekme Test Sistemi
- 40kA parafudr Artık Gerilim Ölçüm Sistemi
- 10-95kN Thermal Mekanik Performans Deney Sistemi
- 0-36 kV Kısmi Deşarj Ölçüm Sistemi
- 0-36kV Referans Gerilim Ölçüm Sistemleri
- 0-300kV Kaçak Akım Ölçüm Sistemleri
- Sızdırmazlık Kontrol Deney Sistemleri
- Yağda Delinme Deney Sistemleri
- Ürün Doğrulama Deney Sistemleri





POLIPAR[®]

THE POWER OF FUTURE

" Perfect Power Solutions "



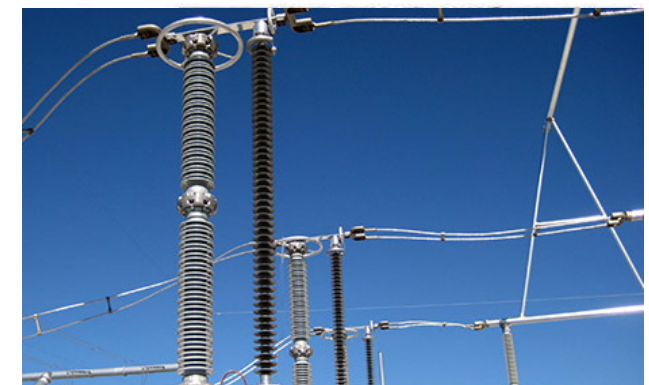
POLIPAR®



POLIPAR®

HV INSTRUMENT TRANSFORMER BRANCH MILL

LV&MV ELECTRIC APPLIANCES MILL



3-40.5KV

Electronic Instrument Transformer (Sensor)

Electronic instrument transformer combined measurement and protection in one suit. Rapid, completely and accurately convey current/voltage signal to a current voltage signals to measuring and protective device, realize metering, measuring, protecting, controlling and condition monitoring; Do not contain iron core (or contain small core), so not saturated, when current transformer secondary is open-circuit, does not produce high voltage, voltage transformer secondary short circuit will not produce large current, easily solve the ferroresonance problem; Secondary output is small voltage signal, it is convenient to connect with electronic instruments and microcomputer monitoring and control protection equipment, simplifies the system structure, reduce the error sources, improve the stability and accuracy of the entire system; The installation is simple and convenient, the operation does not need to maintain, the service life is greater than 30 years, with the construction of the national smart grid, will become the main measuring tool. Installation is simple and convenient, operating without maintenance and service life over 30 years. With the construction of country's smart grid, it will become a main measuring tool.



33-220 KV

Compound Film Insulation CT

Main insulation is wrapped by polyfluorine film, silicon rubber umbrella as outer insulation. Electric field is distributed uniformly, partial discharge and dielectric loss is small. No oil, no gas, no porcelain, safe and free maintenance, small volume, light weight, convenient for transportation and installation.

10-330KV LB

LB Series Dead-tank Oil Immersed CT



The current transformer is outdoor, single phase and oil immersed dead-tank type, which is used for metering and relay protection of 10-330kV, 50 or 60Hz system. The product is adopted to high dielectric strength oil-filled designs using oil paper insulation, the primary insulation is wound from high voltage cable paper. This ensures conservative reliable performance for decades of service in demanding global outdoor environments.

33-220KV LVB1

LVB1 Series Live-tank Oil Immersed CT

Oil immersed live tank current transformer, this series are inverted fully sealed structure, consist of primary winding, body, bellows, upper and lower oil tanks, porcelain bushing, base and terminal box, etc. The body adopts oil-paper capacitive divider insulation, with high insulation utilization and uniform electric field distribution. Secondary winding is placed in the aluminum alloy shield, preventing high voltage attack during high energy discharge and protecting secondary instruments and relays. Oil tanks are made of aluminum alloy with high strength, good sealing and stainless. The stainless steel expander at the top of the product can adjust the volume of oil based on changes of temperature.



10–220KV

JDX & JDCF Series Inductive Oil Immersed VT



Outdoor single-phase oil immersed inductive voltage transformer, widely used in 10 ~ 220kV, 50 or 60Hz power system for metering and relay protection. 33(35)kV and below is single grade type structure, 66-220kV is cascade type structure, whose primary winding has two (220kV is four) grade, windings surrounded on each limbs of one (220kV is two) single phase two-limb core. The product has stable and reliable performance of insulation, convenient maintenance and with long service life time.

33–330KV TYD

TYD Series Capacitive Voltage Transformer

It is outdoor, single phase capacitor voltage transformer, which is used for metering and relay protection of 33~330kV, 50 or 60Hz electric power system. The product consists of capacitor voltage divider and electromagnetic unit. The divider can be also used as coupling capacitor for electric power line carrier communication. CVT is filled with oil and full sealed, no to filter oil or change oil.



33–220KV

LVQB Series SF6 Gas CT

A single winding is a penetrating conductive rod structure with good thermal and stable performance. Secondary windings are placed in aluminum shield shells, and secondary side won't damage by insulation breakdown. The top is equipped with explosion-proof strip to improve product safety, no explosion danger. The bottom is equipped with a density watch, which can effectively monitor and provide alarm signal to the outside world. Small size, light weight, easy installation. When the voltage is greater than 220kV, it is only 1/3 to 1/2 of the oil immersed product.



33–220KV JDQX

JDQX Series SF6 Gas VT

SF6 gas insulated voltage transformer, this series is vertical structure, composed of body, metal shell, wire tube and porcelain insulator (or composite insulator) and so on, adopting monopolar type, SF6 and ling lattice adhesive polyester film insulation make product has a high resistance of voltage. The low voltage winding and high voltage winding are equipped with the internal and external static screen, and high voltage group is also equipped with the shield mask to further improve the field strength distribution. The product has a connection plate, ground terminal, secondary terminal box, gas charging valve, pressure gauge, adsorbent and explosion proof.





➤ Polimer Gvde Teknik zellikleri

➤ Technical Parameters Of Polymer Housing

| Yzeyssel Diren Oranı Rate of resistance on surface (ohm) | Delinme Dayanımı Puncture strenght (kV/mm) | Genilme Dayanımı Tensile strenght (Mpa) | Yırtılma Dayanımı Tearing strenght (N/mm) | Genişleme Oranı Rate of expansion (%) | Ortam Kaybı Loss of medium (tgd/%) |
|--|--|---|---|---|--|
| $\geq 10^{13}$ | ≥ 15 | ≥ 4 | ≥ 9 | ≥ 150 | ≥ 10 |

Siz hala porselen mi kullanıyorsunuz?


Are you still using porcelain?



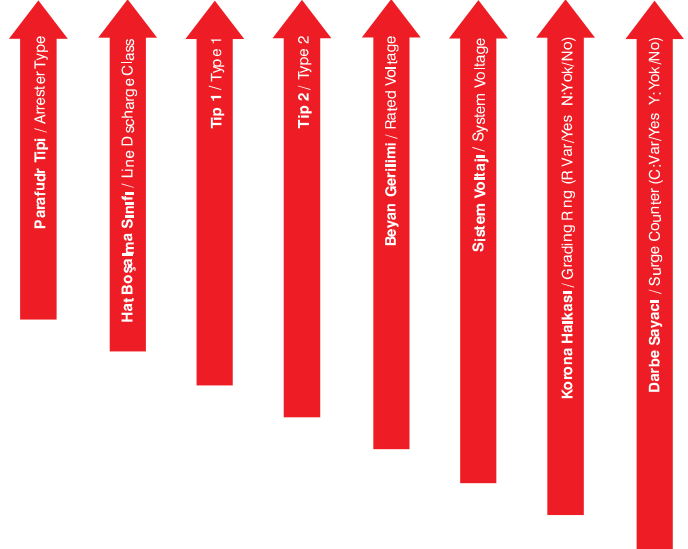
| | Y.G PORSELEN PARAFUDR H. V. Porcelain Arrester | Y.G POLİMER PARAFUDR H.V. Polymer Arrester |
|---|--|---|
| Ağırlık Weight | 144 kV 204 kg (rnek) 204 kg for 144 kV (example) | 144 kV 40 kg (rnek) 40 kg for 144 kV (example) |
| Kırılma Refraction | ok sık Very often | Kırılmaz, son derece esnektir Not refraction |
| Montaj Mounting | Zor, pahalı Hard and expensive | Son derece kolay, elle taşınımı The easiest, can move by hand and cheap |
| Kirlenme Pollution | Etkilenir Affected | Etkilenmez Not affected |
| Bakım Maintenance | Yıkama, silme ve yağlama gibi bakım gerektirir Need maintenance as washing, cleaning and greasing | Bakım gerektirmez Maintenance free |
| Hidrofobik zellik Hydrophobic specialty | Yok Not | Eşsiz hidrofobik zellik Perfect hydrophobic ensures |
| Yaşta elektriksel zellik Electrical characteristic in wet | Düşük Low | Yüksek High |
| Kullanım mr Using life | Kısa-orta Short-medium time | Uzun Long time |
| lkeye maliyeti ve kaçak akım Cost and residual current | Pahalı-yüksek kaçak akım Expensive, the high residual current | Ucuz-düşük kaçak akım Cheap, the low residual current |
| Kirli havada erozyona diren Resistance against erosion in pollution weather | Düşük Low | Yüksek High |
| Btnlk Completeness | Uyumsuz alt nite birleşimi Maladjusted subunit | Uyumlu alt nite birleşimi Well-adjusted subunit |
| Kantilever dayanım Cantilever strength | Düşük (Sert- rijid yapıdan tr) Low cause rigid Housing | Yüksek (Esnek yapıdan tr) High cause elastic housing |
| Enerji hat grnm View at energy lines | irkin Looking bad | Estetik Looking good |
| Ambalajlama, depolama ve nakliyat Package, storage and shipping | Tahta ambalajlarda, , pahalı nakliyat ve nakliyat zaafı At board package, need large store, and expensive shipping. | Karton kutularda, ucuz nakliyat ve düşük nakliyat zaafı At cardboard, need small store, and cheap shipping |

➤ POLİPAR HT SERİSİ SİPARİŞ KODLAMASI VE ÜRÜN ETİKETİ

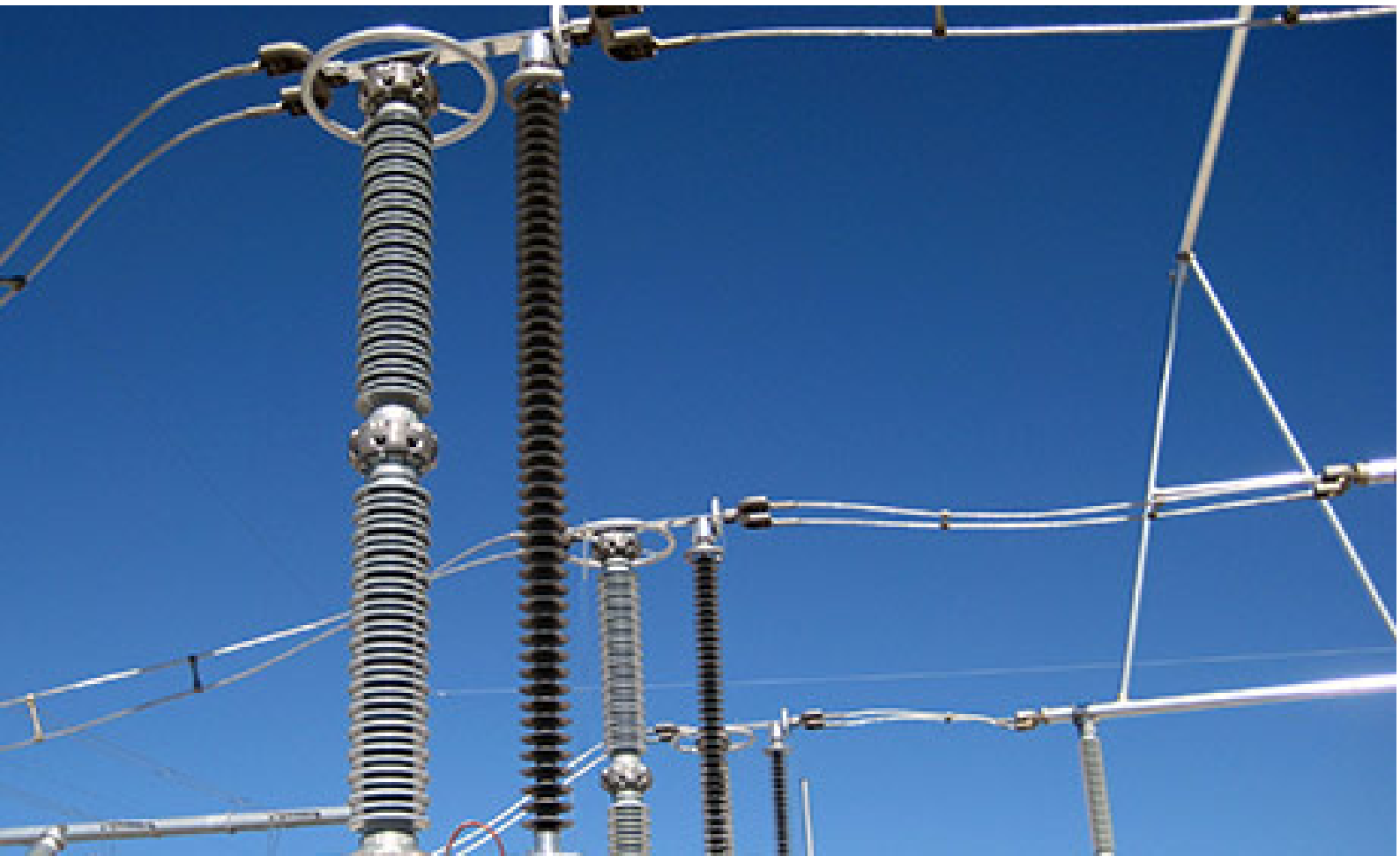
➤ POLIPAR HT SERIES ORDERING CODES AND TICKET DESIGN

| | | |
|---|---|-------------------------|
| Ur <input type="text"/> |  | In <input type="text"/> |
| Uc <input type="text"/> | | Is <input type="text"/> |
| f <input type="text"/> | | |
| POLIPAR ISO 9001 - 2015 IEC 60099-4 TS EN 60099-4 ANKARA - TURKEY | | |
| İmalat Yılı / Prod. Date <input type="text"/> | | |
| Sipariş No <input type="text"/> | Tip-Seri No <input type="text"/> | |
| Order No <input type="text"/> | Type-Serial No <input type="text"/> | |
| Kod No <input type="text"/> | Sınıf <input type="checkbox"/> | |
| Code No <input type="text"/> | Class <input type="checkbox"/> | |

HY - SM - TY1/TY2 - 144/154 - R/N - C/Y



Notlar / Notes



Turkey

AŞIRI GERİLİM
ÇÖZÜMLERİ
UYUMLU
BİLESENLER

OVERVOLTAGE
SOLUTIONS
LOGICAL
CONNECTIONS





parafudr.com



POLIPAR

POLIPAR
1203. Cadde No : 38/L-5/D OSTİM OSB ANKARA
Tel : +90 312 354 38 48 - Faks : +90 312 354 79 38



www.polipar.com.tr

**ERKAN
ELEKTROMEKANİK A.Ş.**

Erkan Elektromekanik Mlz. Elektrik Müh. San. Tic. A.Ş.
100. Yıl Biv. Kosova İş Mrk. No: 137/K OSTİM ANKARA
Tel: +90 312 309 26 68 - Faks: +90 312 311 37 90

www.erkanelk.com

aşanlar enerji
"Kablo'da Lojistik Merkezi"

Aşanlar Enerji Müh.Taahhüt İth. İhr. San. ve Tic. Ltd. Şti.
Sanayi Caddesi No:1/1 06050 Ulus - ANKARA
Tel: +90 312 310 49 36 - Faks: +90 312 310 49 38

www.asanlarenerji.com

NOT! POLIPAR sürekli ürün geliştirmesi yapmaktadır. Bu nedenle bildiri ya da uyan yapmaksızın tasarım, teknik değer, boyut vb. katalog içeriğinde değişim yapma hakkını saklı tutmaktadır.
NOTE! POLIPAR is working continuously to improve the products. We therefore reserve the right to change designs, dimensions and data without prior notice.